

Dismantling the Barriers to Personal Data Portability

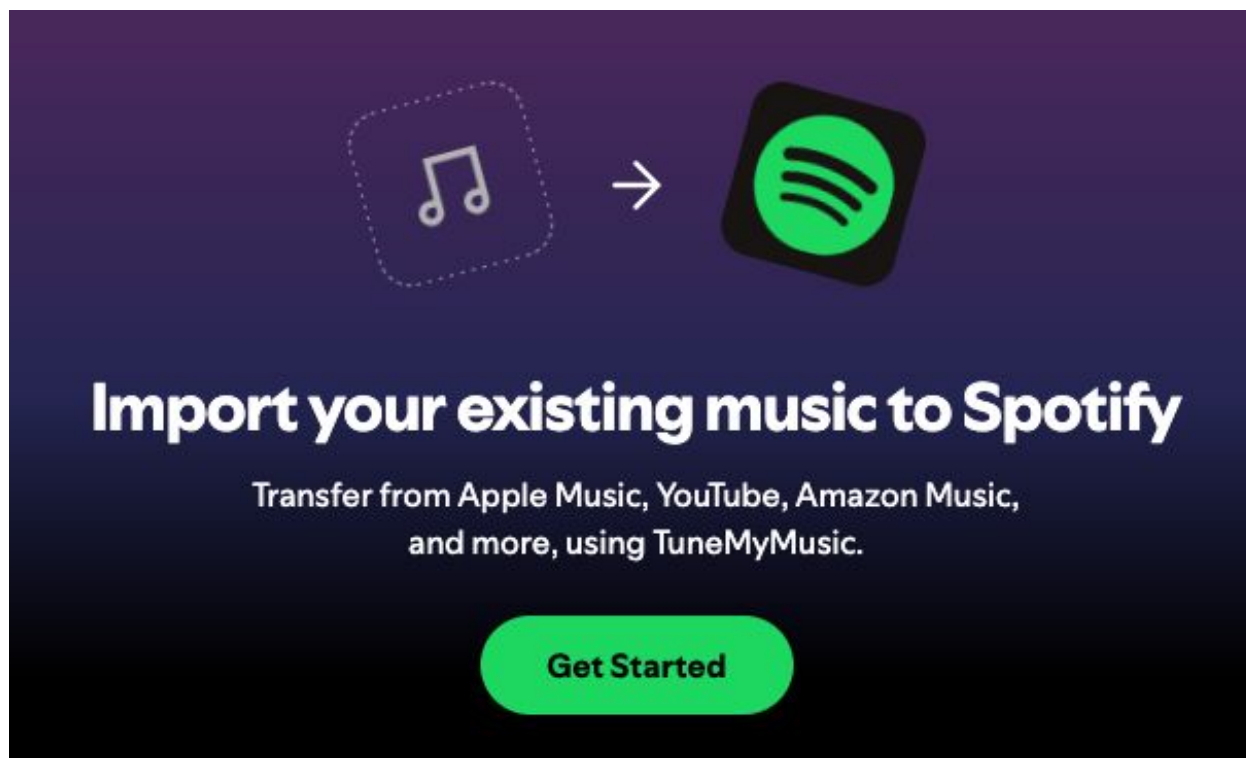
Usability – Interoperability – Trust

Lisa Dusseault, *Data Transfer Initiative*
Arthur Borem, *University of Chicago*
PEPR 2026

DATA **TRANSFER**
INITIATIVE

The logo for the Data Transfer Initiative features the words "DATA", "TRANSFER", and "INITIATIVE" stacked vertically. "DATA" and "INITIATIVE" are in black, while "TRANSFER" is in white text inside a green rectangular box. A black line with green circular endpoints at the top and bottom connects the "D" in "DATA" to the "I" in "INITIATIVE".

The Right to Portability



The advertisement features a dark purple background. At the top, there is a white musical note icon inside a dashed white square, followed by a white right-pointing arrow, and then the Spotify logo (a green circle with three white curved lines) inside a black rounded square. Below this graphic, the text "Import your existing music to Spotify" is written in white. Underneath that, in a smaller white font, it says "Transfer from Apple Music, YouTube, Amazon Music, and more, using TuneMyMusic." At the bottom center, there is a bright green rounded rectangular button with the text "Get Started" in black.

Import your existing music to Spotify

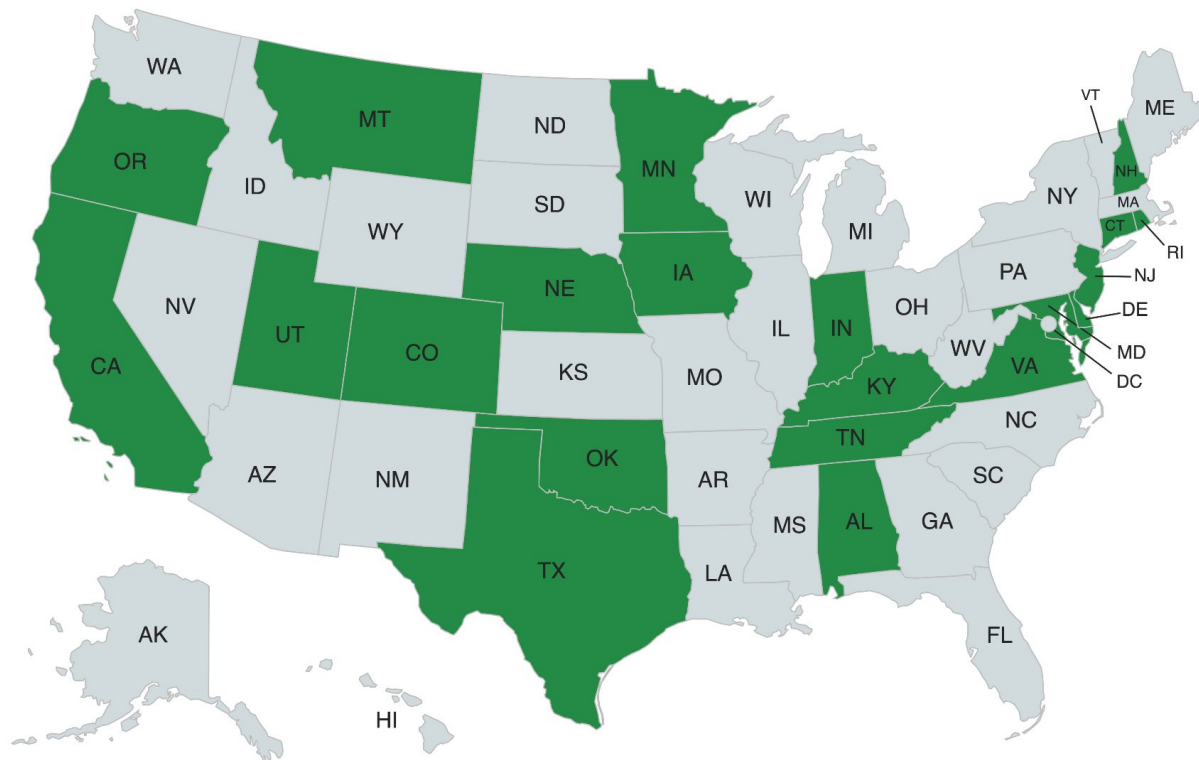
Transfer from Apple Music, YouTube, Amazon Music,
and more, using TuneMyMusic.

Get Started

The Right to Portability



The Right to Portability: US & Canada



19 states (and counting!)

The Right to Portability

Privacy



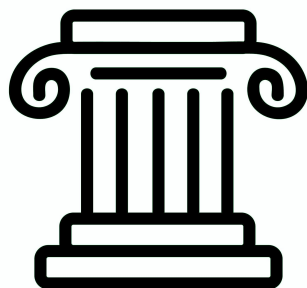
Choice



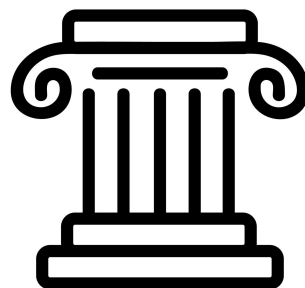
Innovation



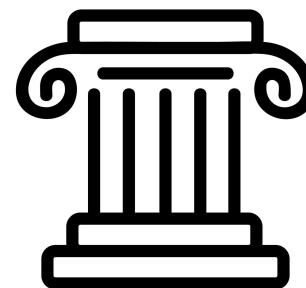
Outcomes



Portability



Transparency



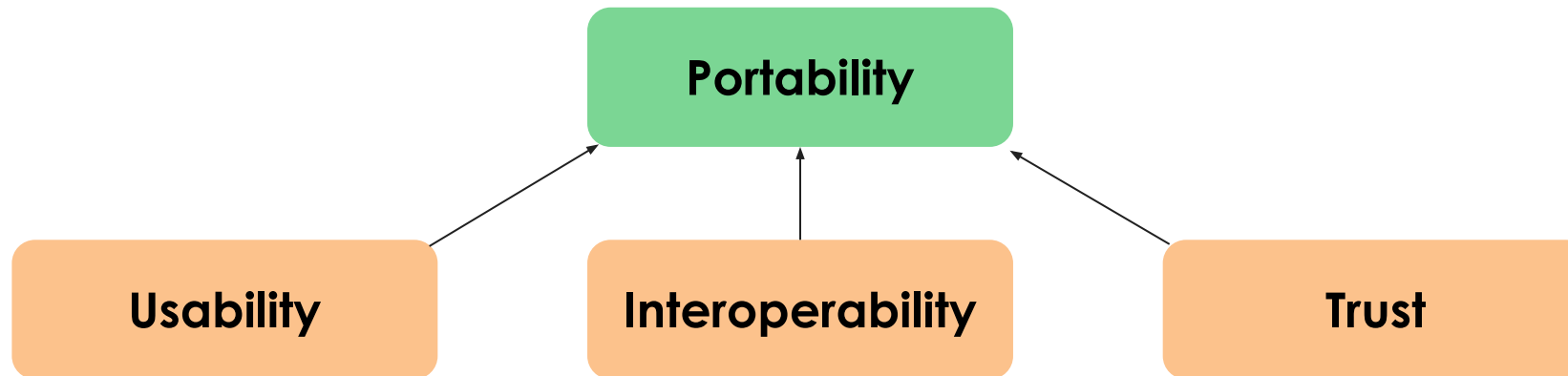
Deletion

Methods

The Right to Portability

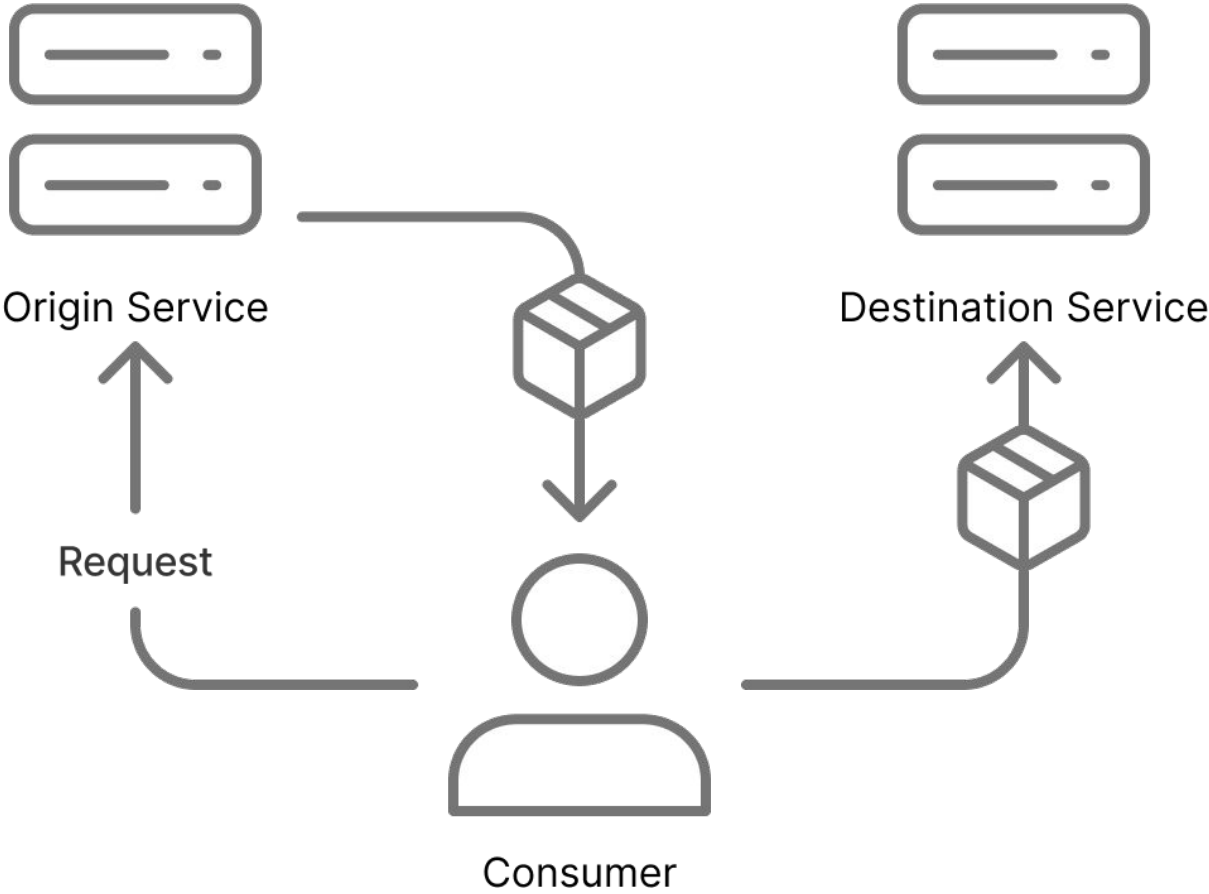
Not widely used...

why not?



We need to make progress on all three!

Consumer Experience: Import-Export Model



Account data

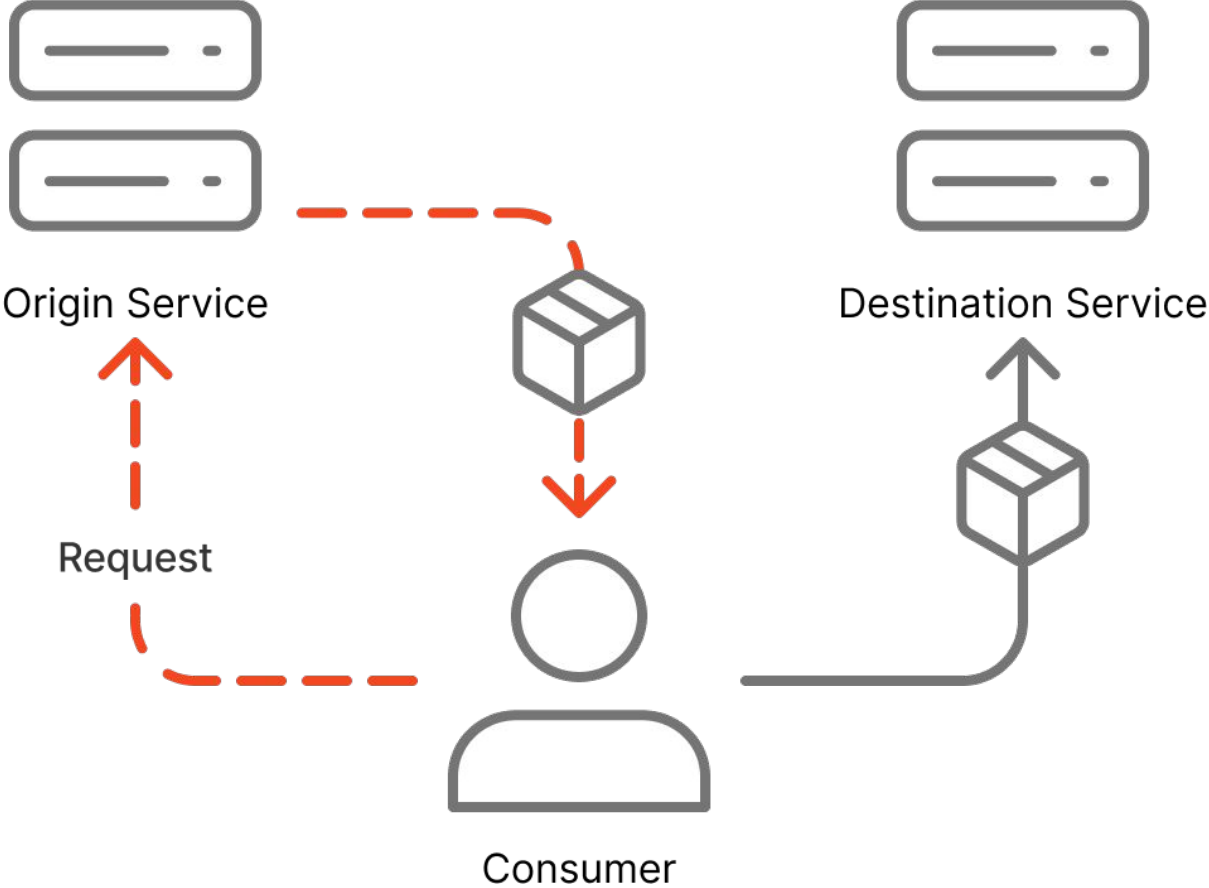
Import data to your account, or export your account in CSV format:

IMPORT YOUR DATA

EXPORT YOUR DATA

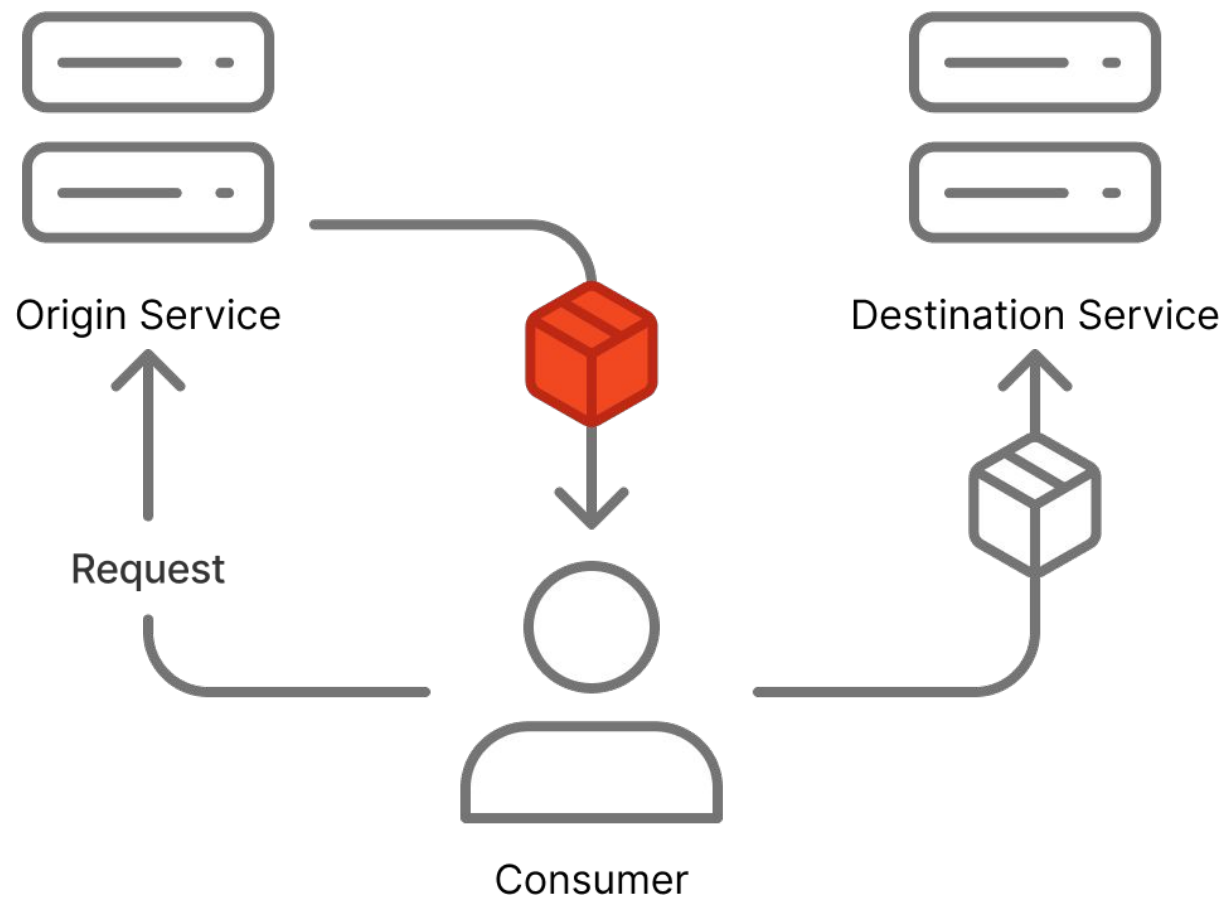
letterboxd.com

Consumer Experience: Import-Export Model



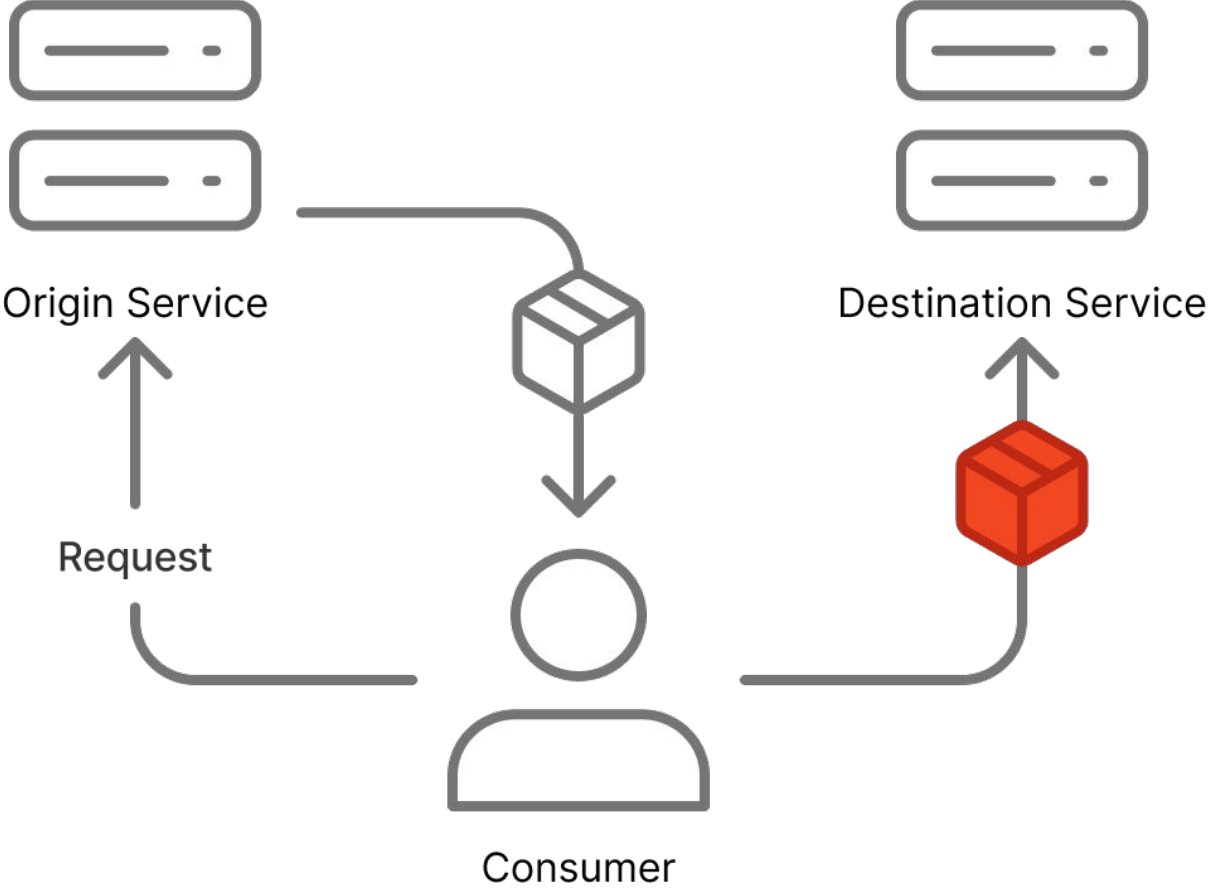
Long wait times and inconsistent support.

Consumer Experience: Import-Export Model



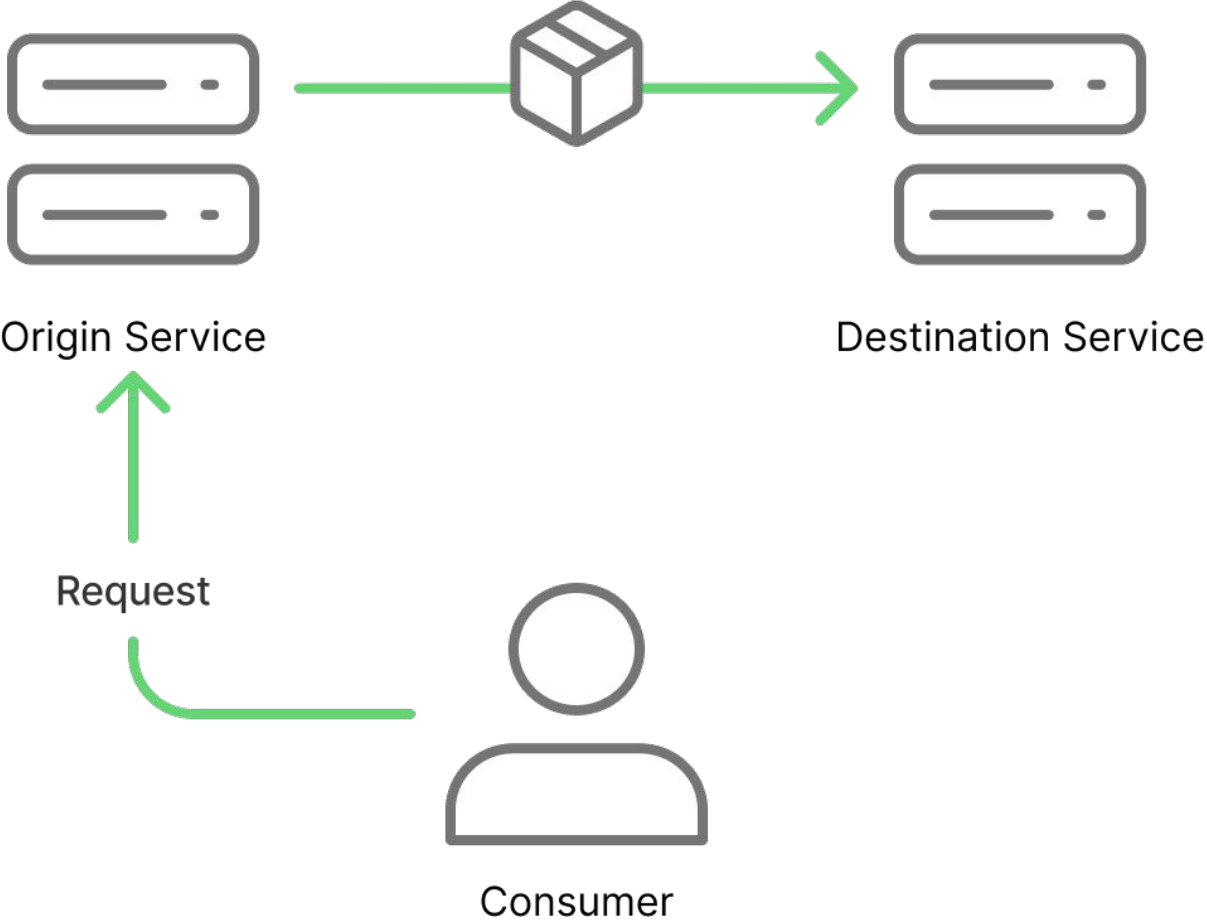
Large data packets.

Consumer Experience: Import-Export Model



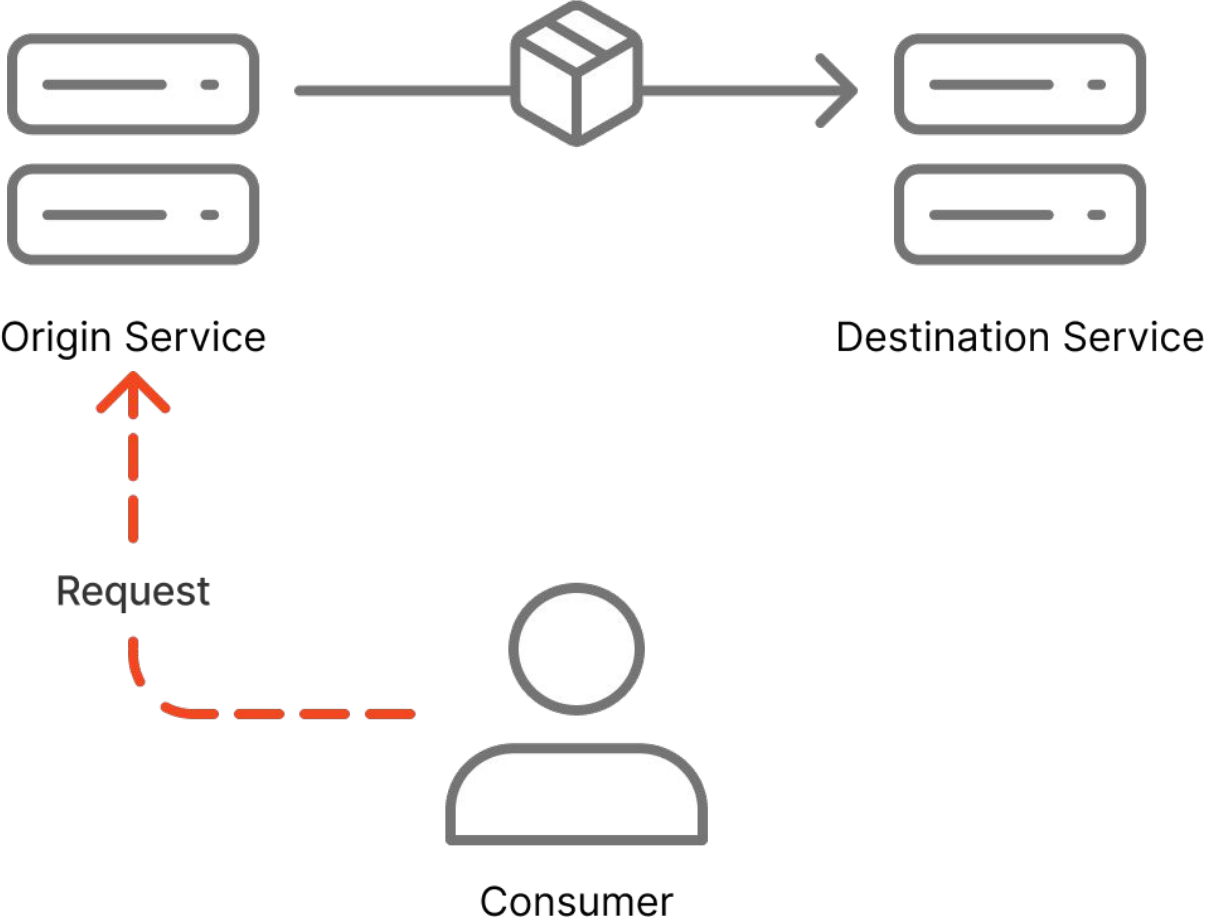
Non-standardized data packets.

Portability Model: Direct Server-to-Server



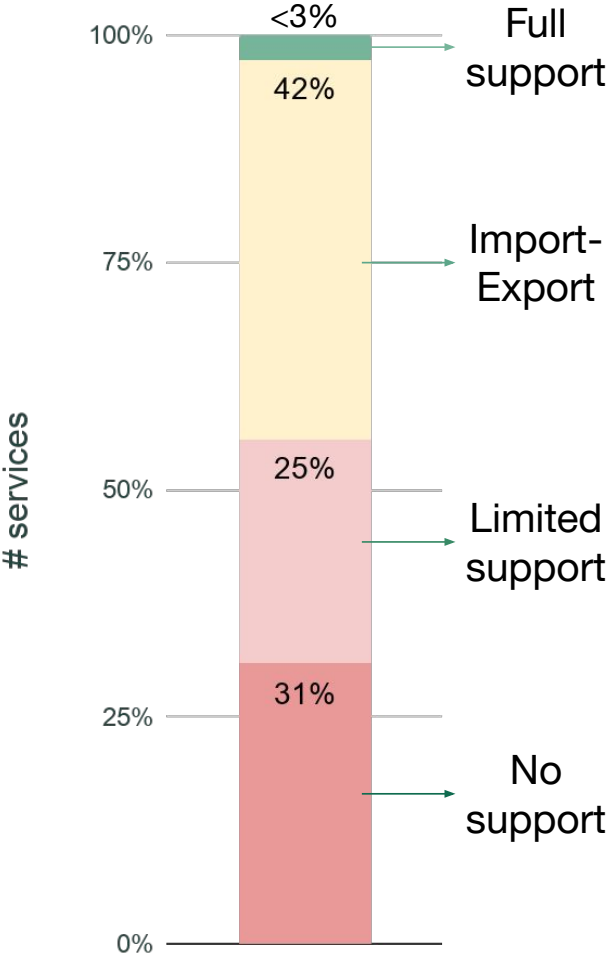
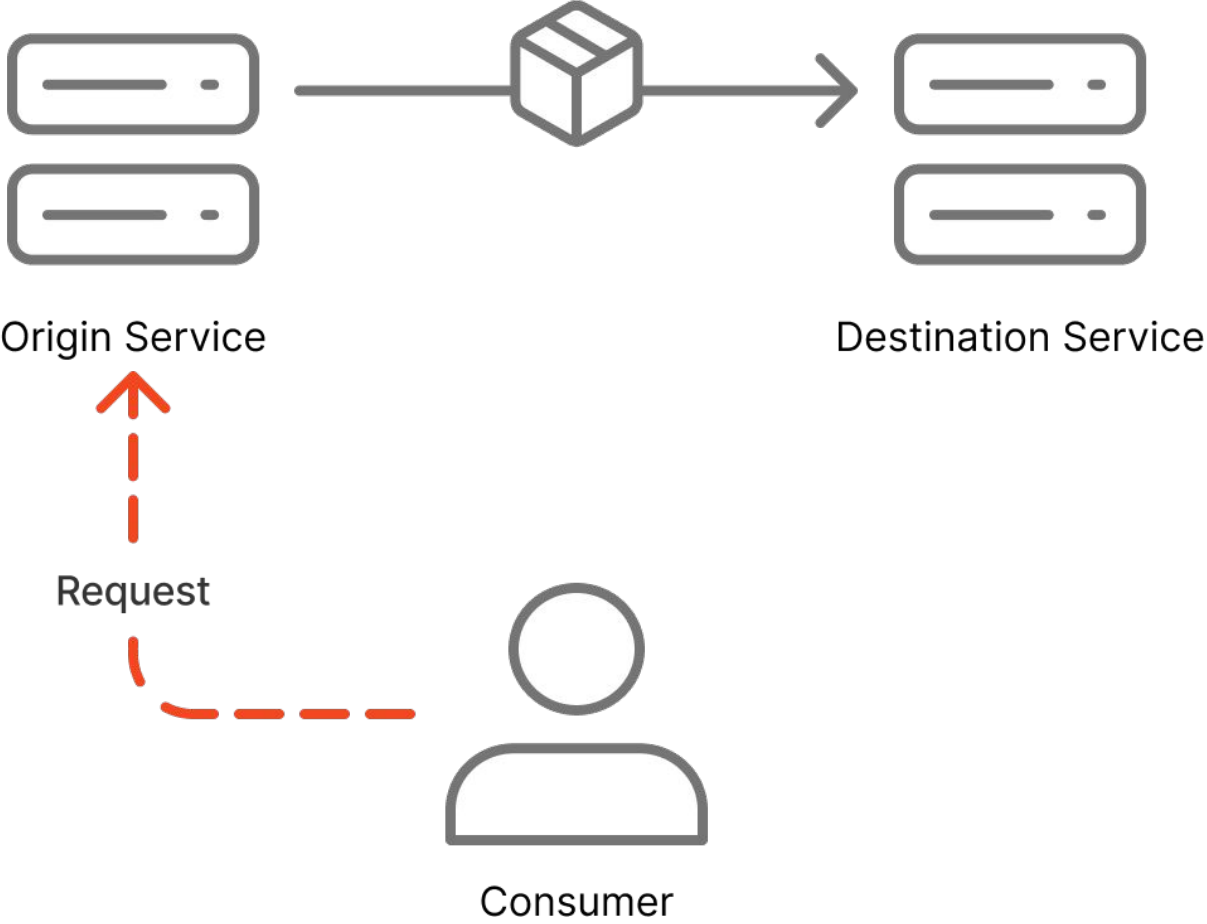
Consumer initiates and authorizes. **That's it!**

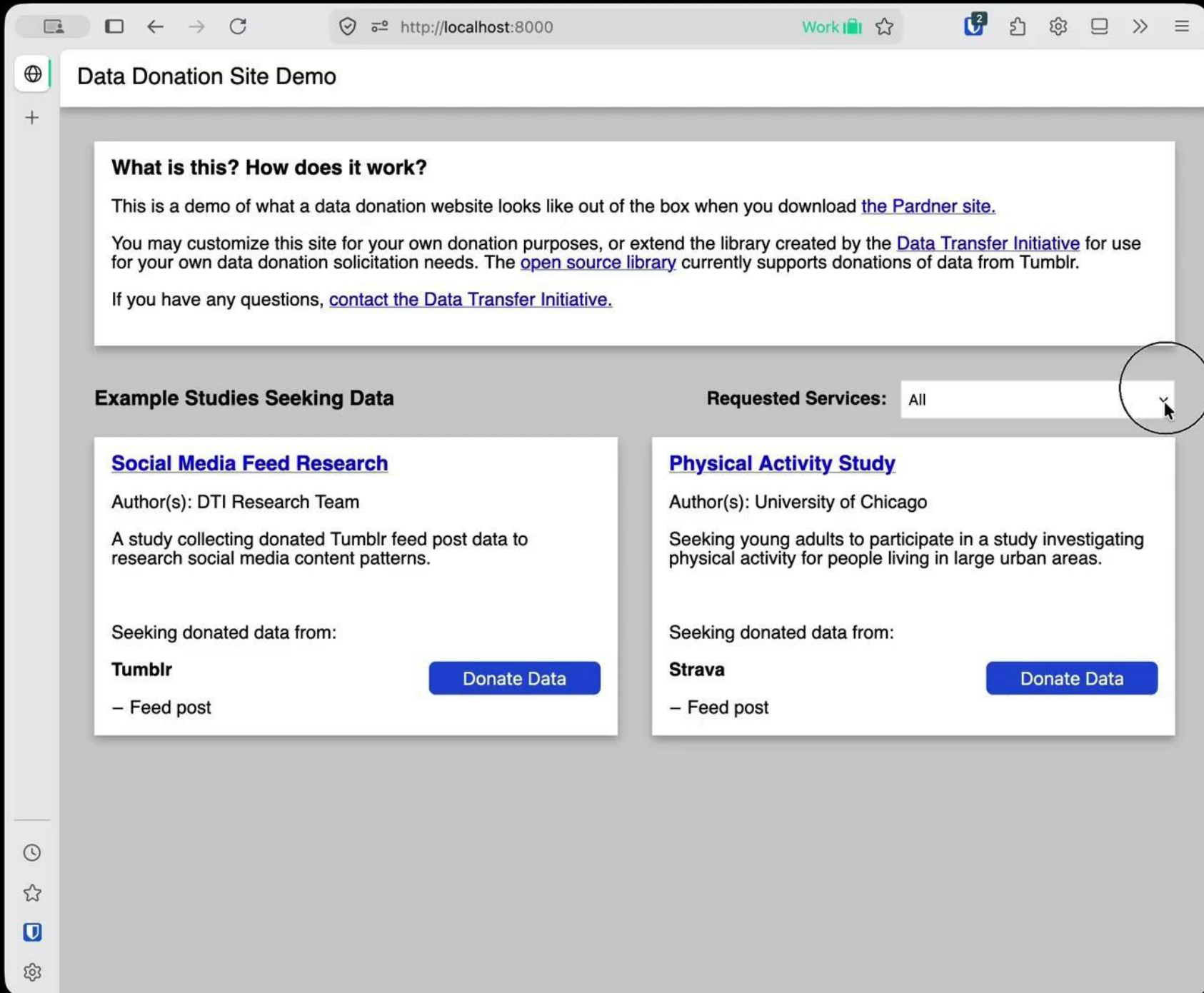
Portability Model: Consumer Issues



Limited support.

Portability Model: Consumer Issues



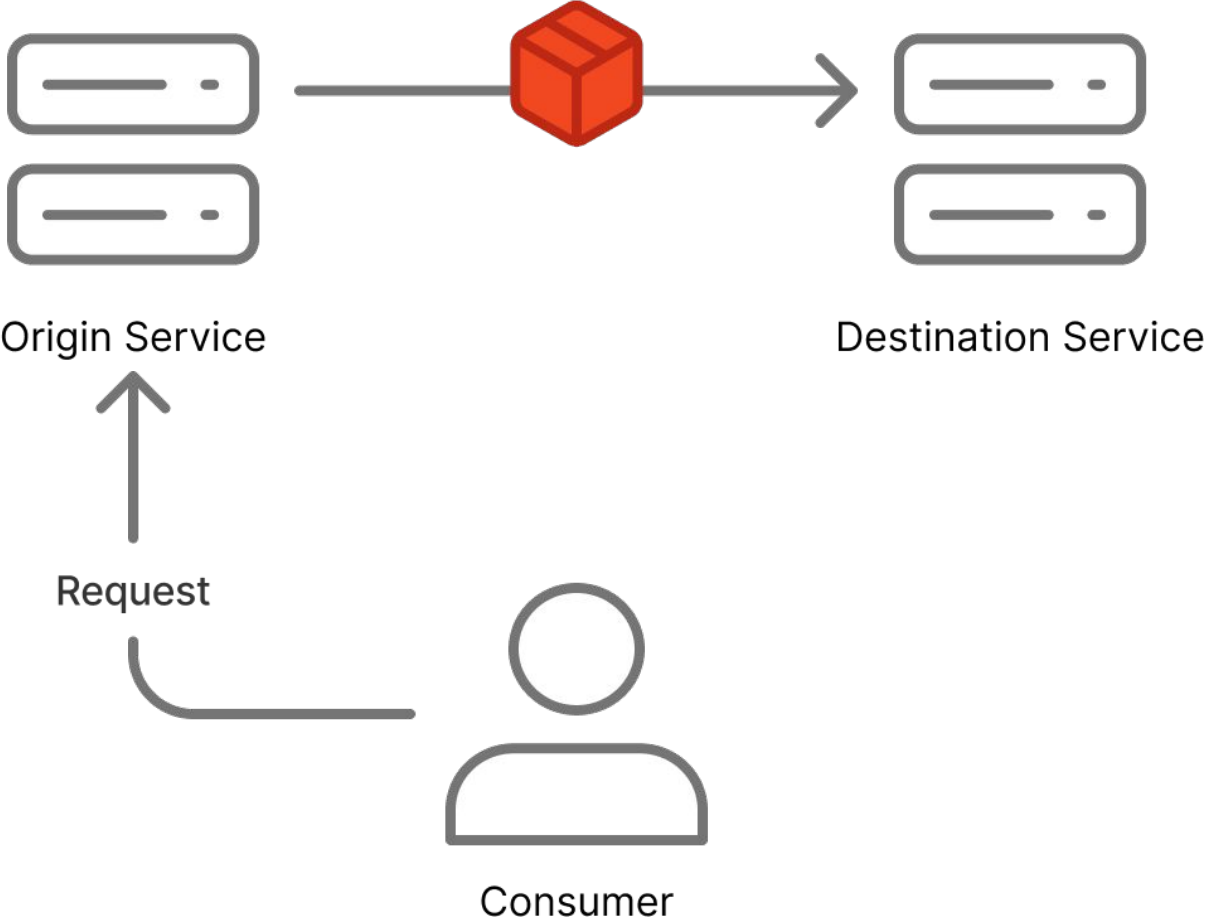


✓ Standardized UI

✓ Uniform data types

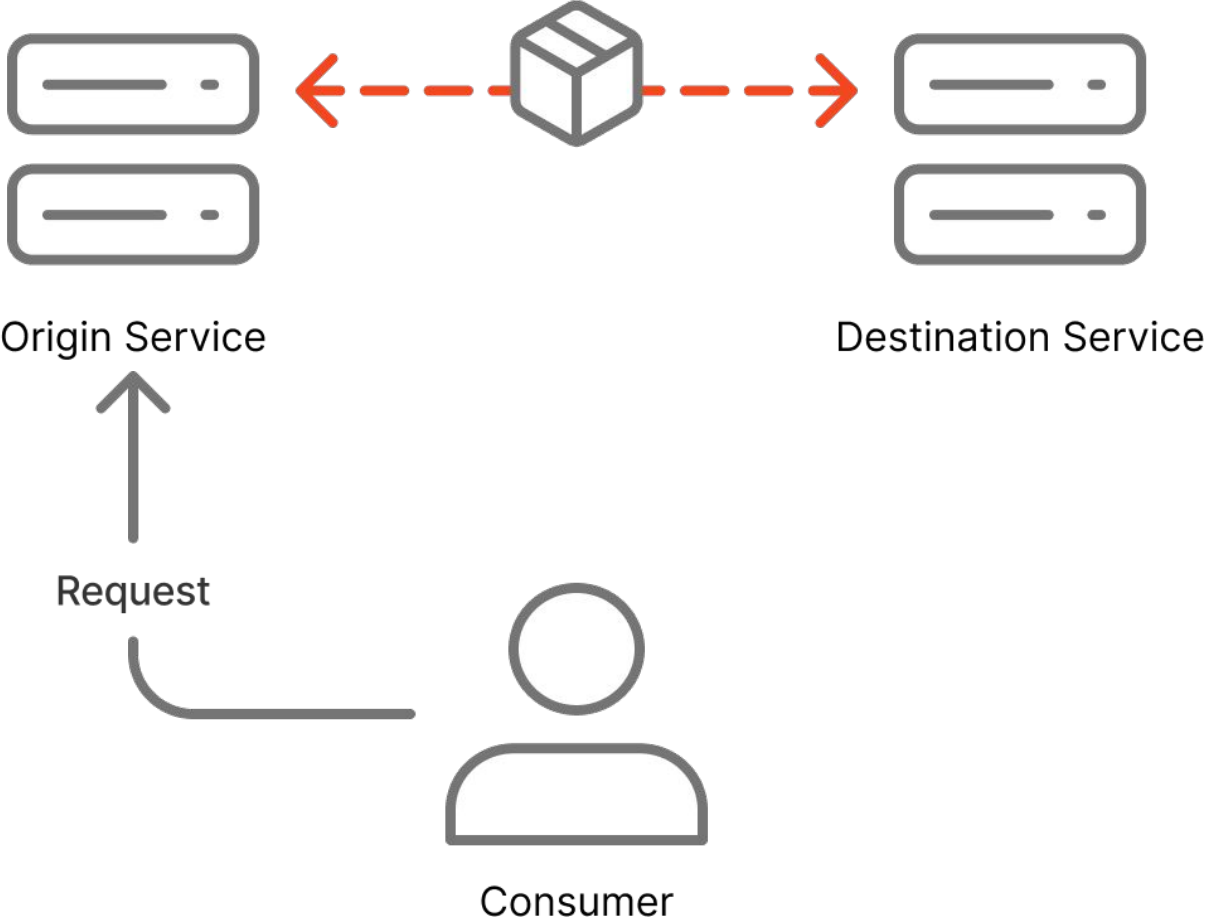
✓ Consistent OAuth Flow

Interop Challenges: Data models/formats



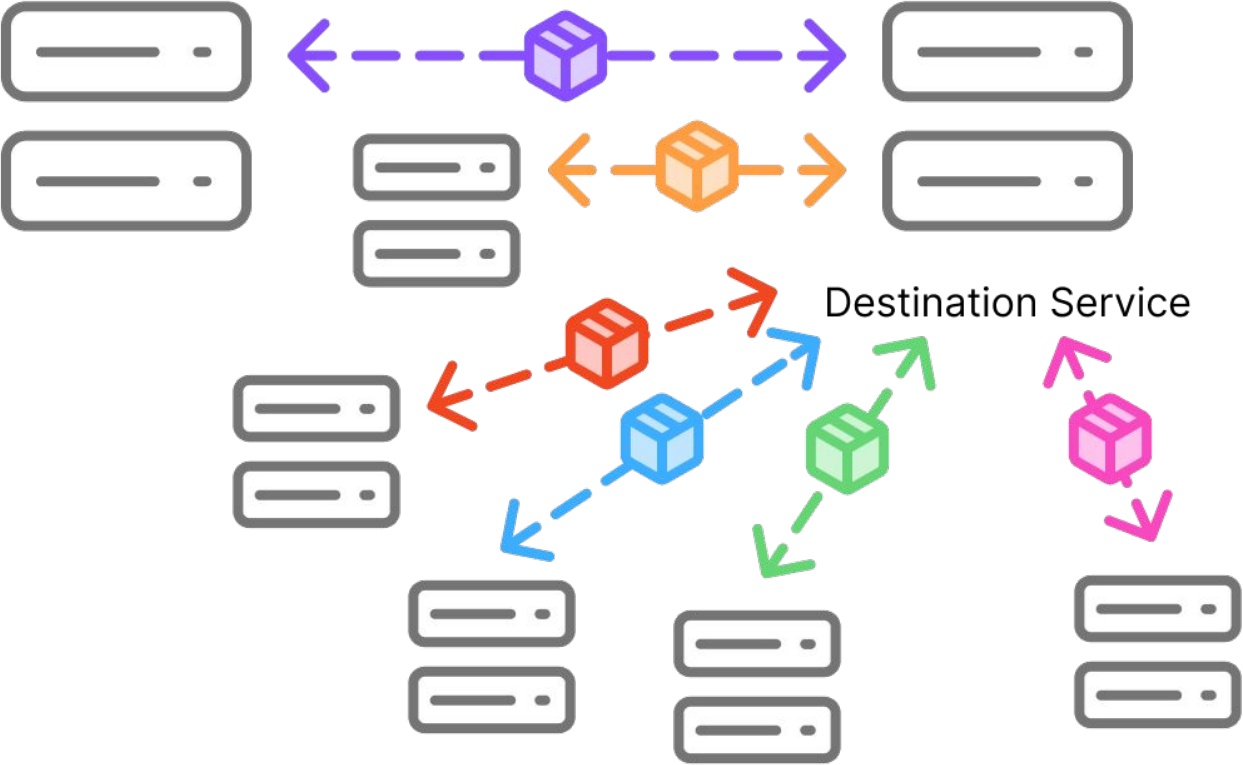
Non-standardized data packets
Poor synchronization support

Interop Challenges: A priori coordination



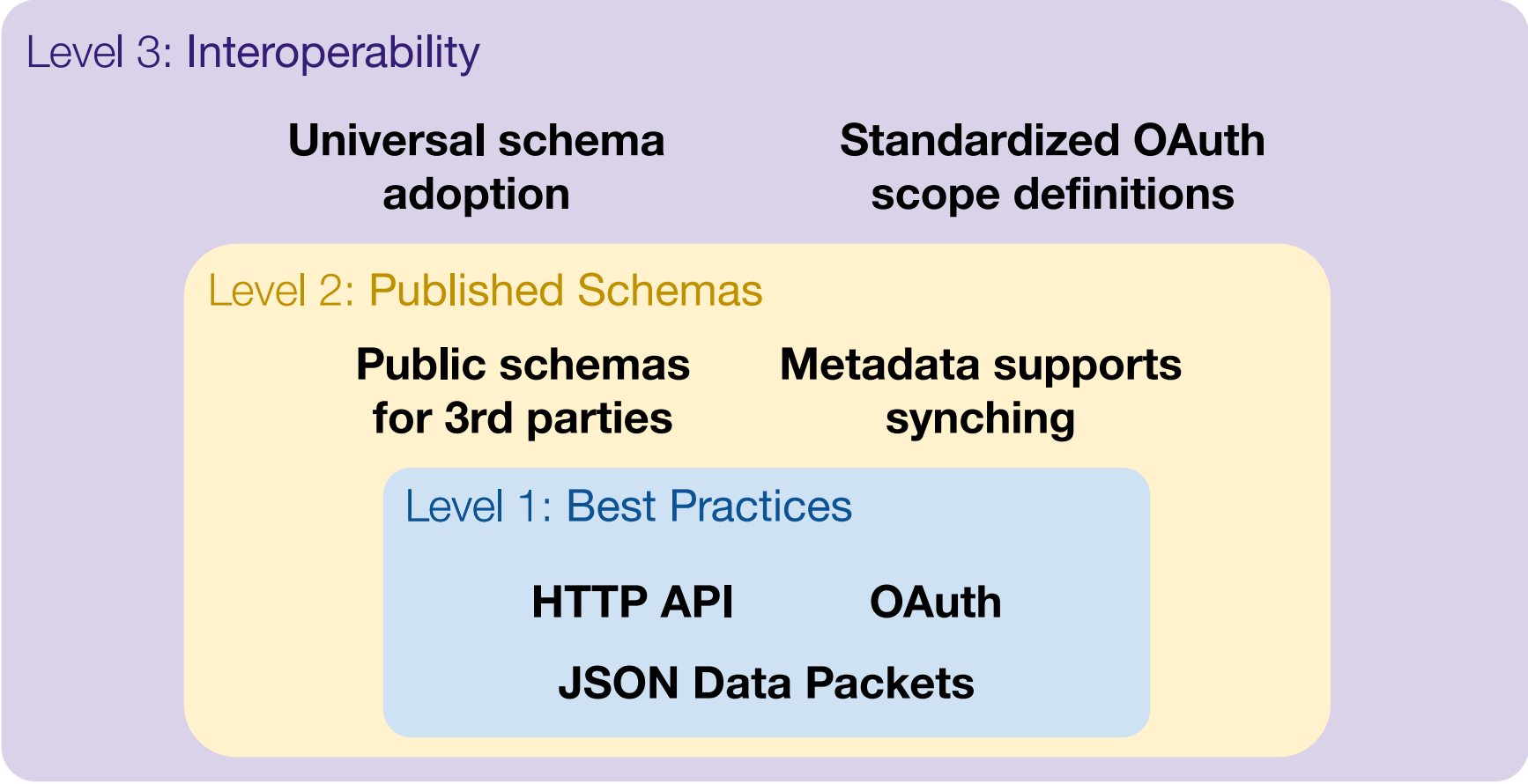
API keys
OAuth scopes
OAuth endpoints

Interop Challenges: Scale



Repeat, repeat, repeat!

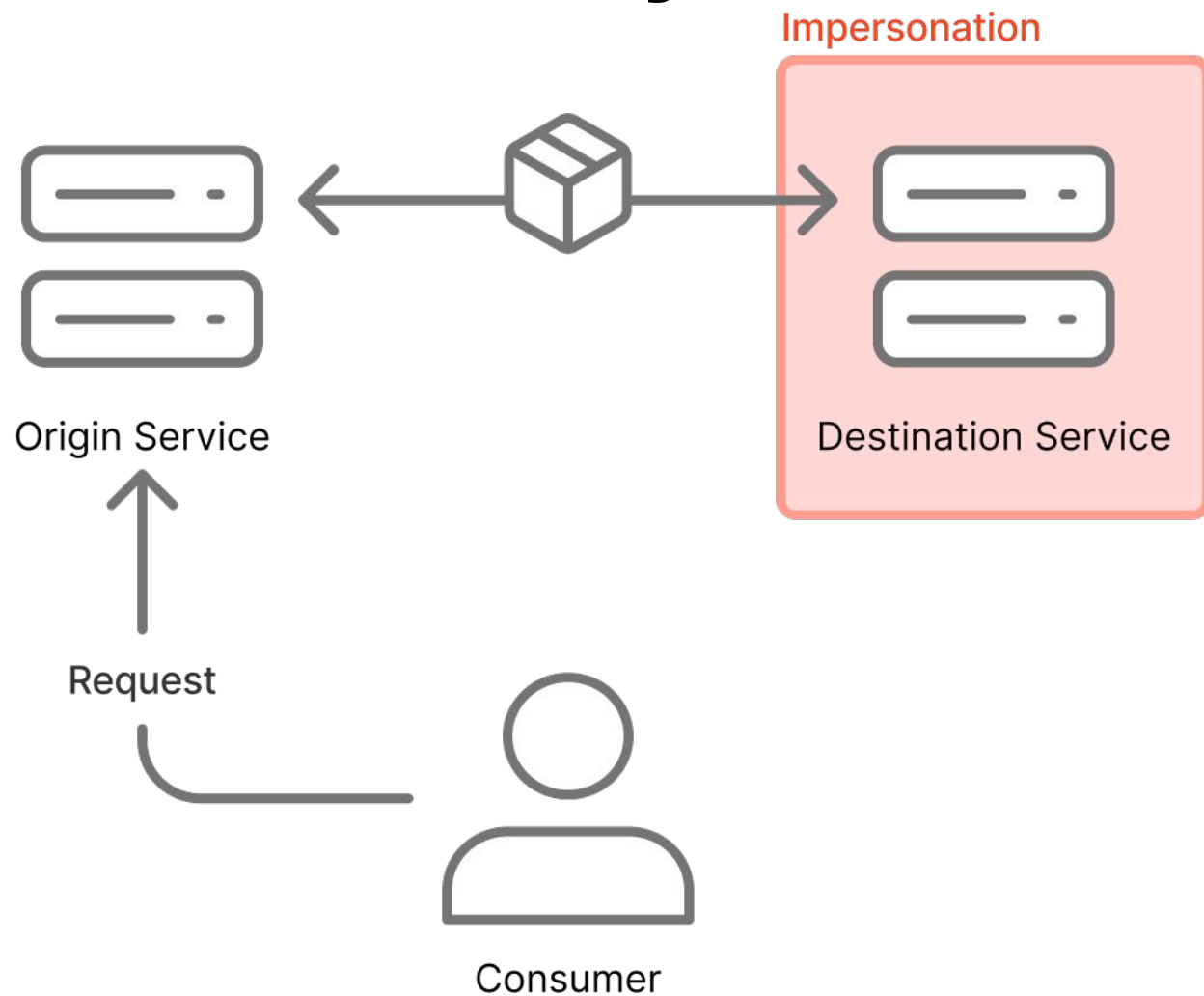
Data Interoperability: Recommendations



Data Interoperability: Recommendations

```
Sample Schema
11  {}
12  "$schema": "https://json-schema.org/...",
13  "$id": "https://id.schemaspub/.../social+posts+schema",
14  "title": "Schema for social post object...",
15  "type": "object",
16  "properties": {
17    "activity": {
18      "type": "object",
19      "properties": {
20        "attachments": {
21          "type": "array",
22          "items": {
23            "type": "object",
24            "properties": {
25              "content": {
26                "type": "string"
27              },
28              "name": {
29                "type": "string"
30              }
31            }
32          }
33        }
34      }
35    }
36  }
37 }
```

Trust & Safety Problems in Portability



Spread through phishing, etc.

Current Approach to Trust Issues

- VLOPs have unique, expensive partner review systems
- Smaller companies with personal data APIs: ad-hoc partnerships

No information sharing, no consistency, user choice is limited.

1:1 Verification: Inconsistent Requirements

Company A

- Upload privacy policy
- SOC/2 or CASA report
- Provide Data Protection Officer or security reporting address
- Attest to list of data storage and protection policies

Company B

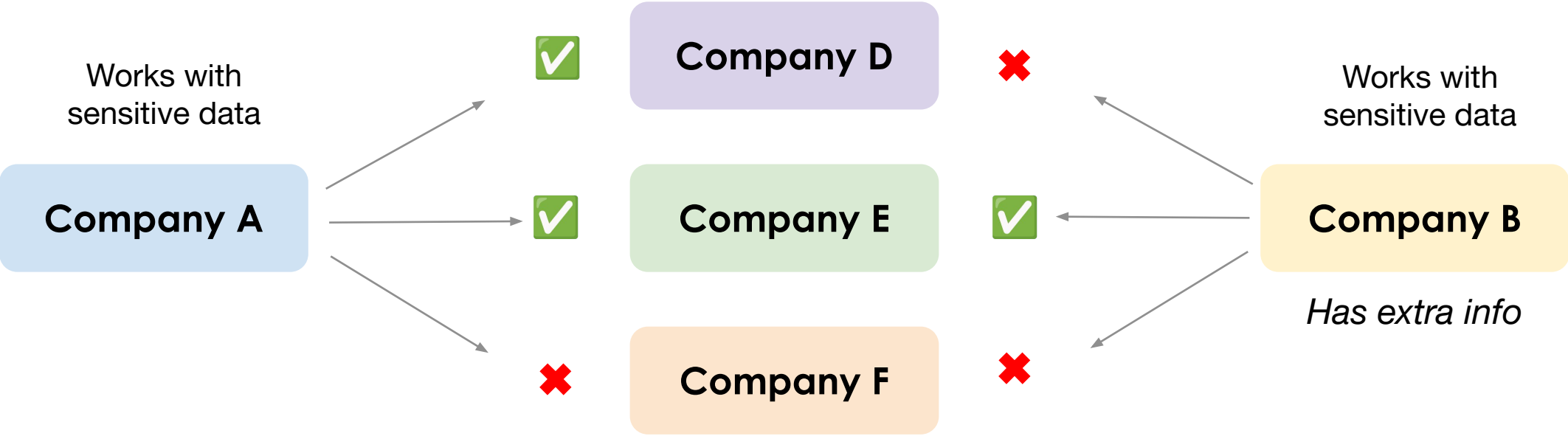
- Link to privacy policy which must cover GDPR
- SOC/2 or ISO27001
- Must have Data Protection Officer
- Data Processing Agreements

Company C

- Privacy policy must cover data usage in specific ways
- Upload video showing user authentication/ authorization
- Additional requirements depending which API will be used

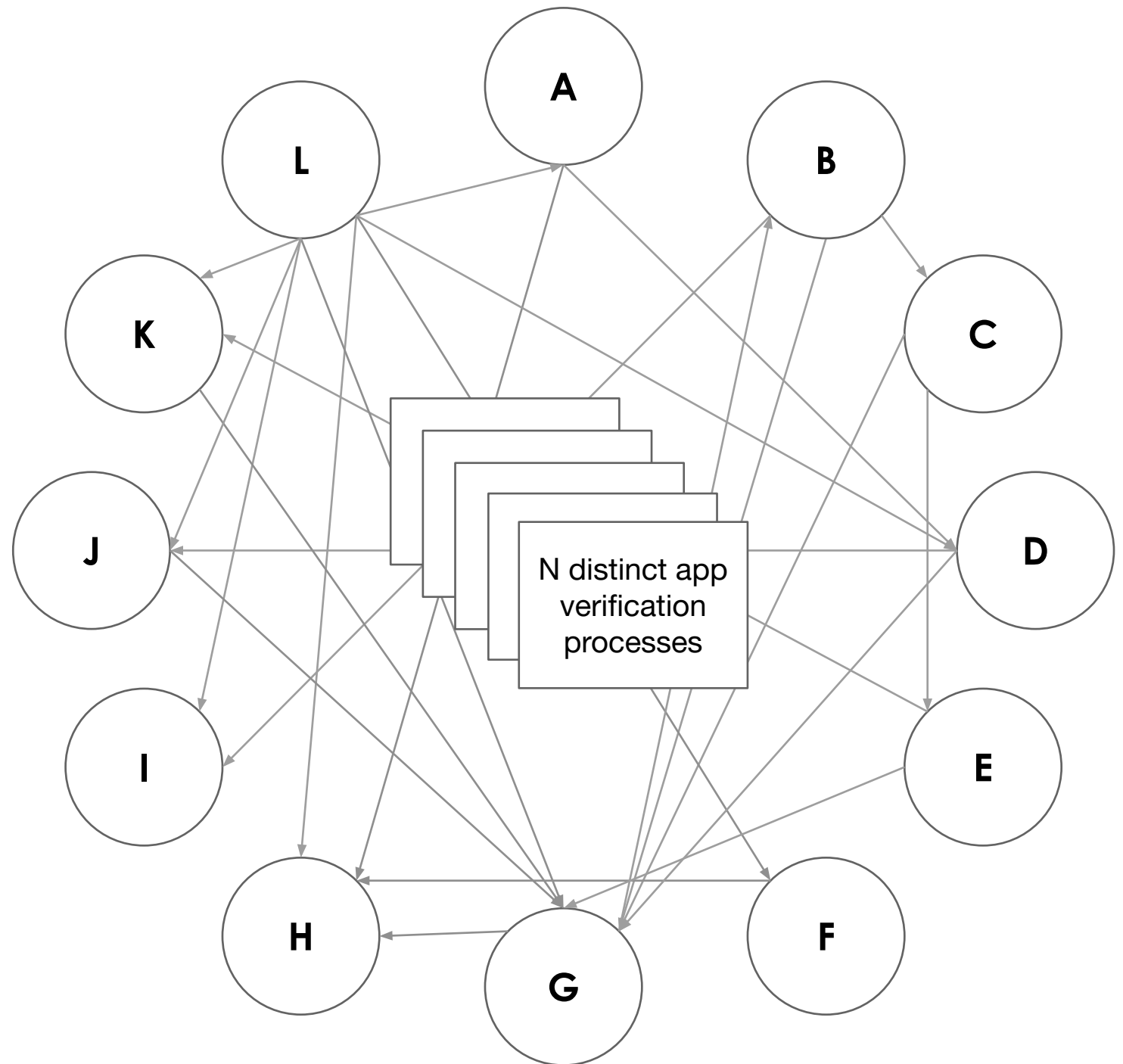
How do I meet ALL these requirements??

1:1 Verification: Inconsistent Outcomes



Inconsistency is bad for Company A, bad for Company D, and bad for users.

**1:1 trust verification
doesn't scale to NxN**



Recommendations for Trust

Use Shared Criteria



Transfer Party Authentication



Proper Jurisdiction



Data Security

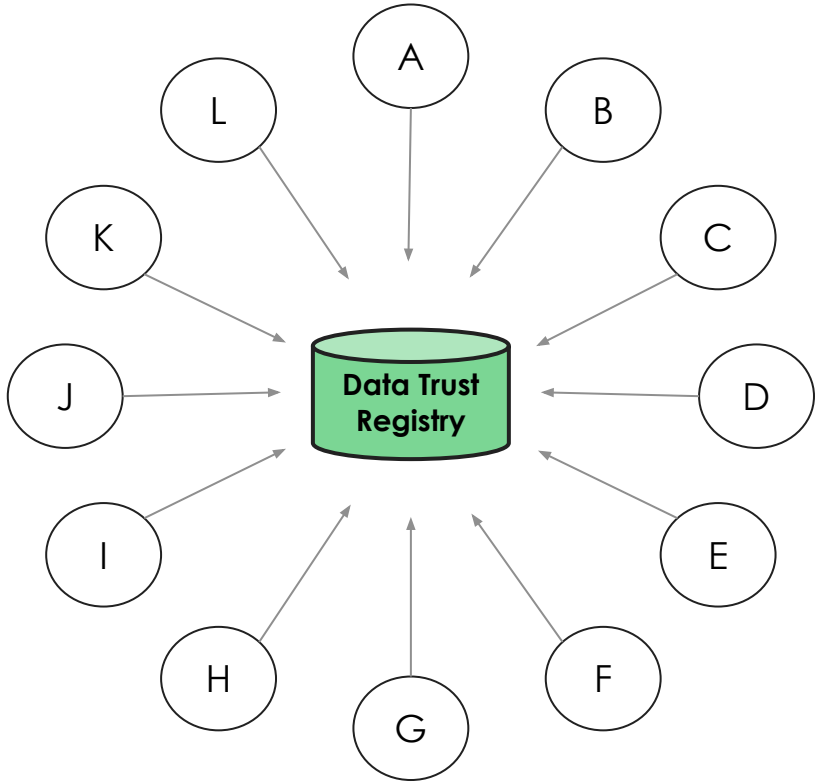


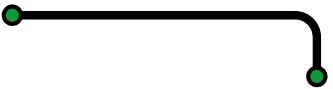
Transparency to End Users



End User Authorization

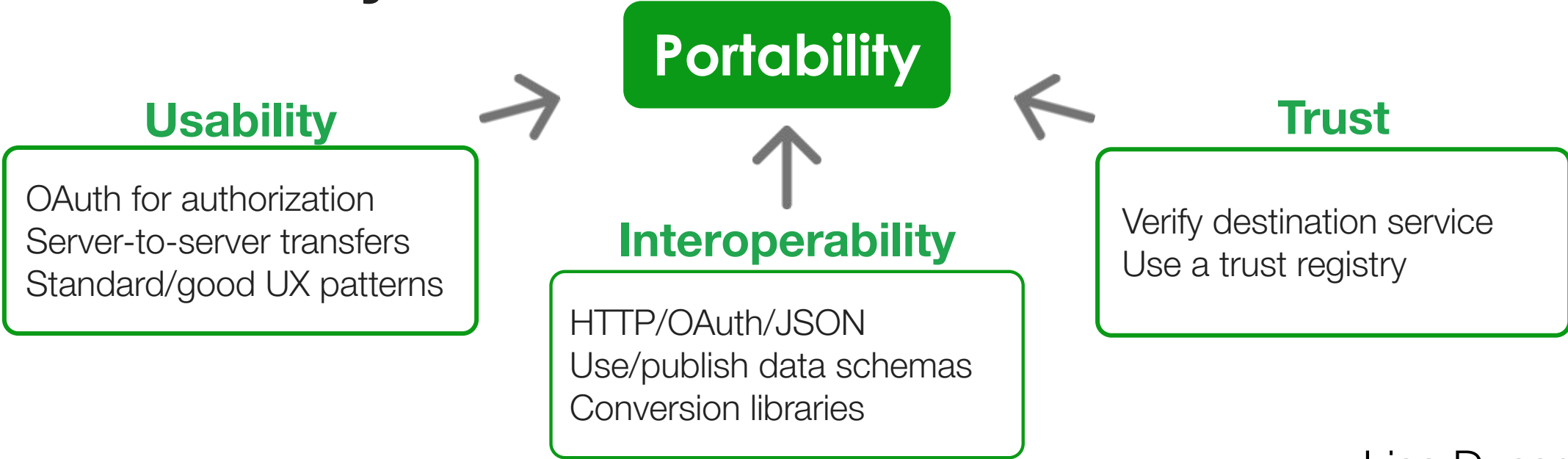
Use Shared Trust Registry





Dismantling the Barriers to Personal Data Portability:

Takeaways



Lisa Dusseault
Arthur Borem

References

Tools

- [Pardner and Pardner site](#)
- [Data Transfer Initiative](#)
- [Data Trust Registry](#)
- [Data Export Schemas Samples](#)
- [schemas.pub](#)

Contact

- [arthurborem.com](#)
- [Lisa on Fediverse](#)

Reports & Studies

- [Threat Model](#)
- [The Landscape of Data Subject Rights \(Dissertation\)](#)
- [Data Subjects' Reactions to Exercising Their Right of Access \(USENIX Security 2024\)](#)